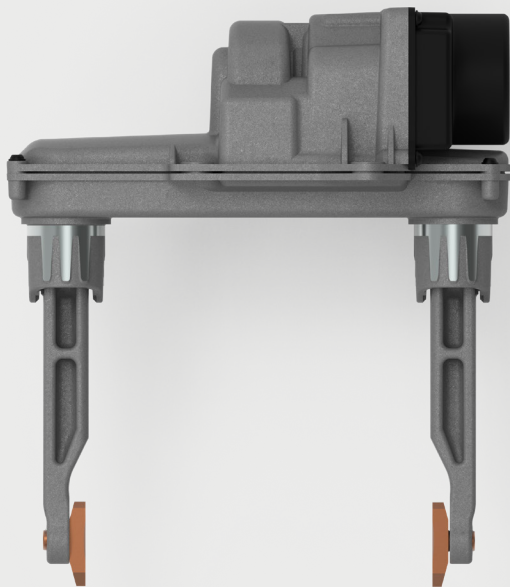


DCA ACTUATOR

DOG CLUTCH ACTUATOR



AT A GLANCE

- > PREMIUM PERFORMANCE
- > CUSTOMIZABLE CONTROL LOGIC
- > SIMPLE INSTALLATION
- > EFFICIENT ACTUATION

PRODUCT DESCRIPTION

The Dog Clutch Actuator (DCA) from Kongsberg Automotive offers premium performance with customizable control logic. Designed for simple installation and efficient actuation, the DCA ensures reliable and optimal operation in various applications. Experience superior functionality and ease of use with Kongsberg Automotive's DCA.



DCA ACTUATOR

DOG CLUTCH ACTUATOR



PRODUCT SPECIFICATION

MOTOR TYPE	BLDC 24v/125W
NUMBER OF SHIFTS	>8 000 000
SHIFT STROKE	<±12 mm
DECOUPLING SHIFT TIME	<10ms/mm
MAX FORCE	>1500N
EMC COMPLIANCE	CISPR 25 class 3
AMBIENT TEMPERATURE RANGE	-40°C to 125°C
INGRESS PROTECTION	IP6K7 / IP6K9K

FEATURES

- > RESPONSIVE GEAR ENGAGEMENT
- > BUILT-IN DETENT
- > OPTIMAL TRANSMISSION DESIGN
- > RESISTANT TO HEAVY DUTY LEVELS OF VIBRATION AND SHOCK
- > INTEGRATED SHIFT FORK: EASY INTEGRATION WITH TRANSMISSION
- > EASY MOUNTING WITH MINIMAL OPENINGS IN TRANSMISSION HOUSING TO MAINTAIN STRUCTURAL INTEGRITY

SUITABLE APPLICATION

- > COUPLING/DECOUPLING OF ELECTRICAL DRIVE AXLE UNIT ON PHEVS.
- > COUPLING/DECOUPLING OF AWD COUPLING
- > GEAR SHIFTING ON EV TRANSMISSIONS WITH DOG CLUTCH COUPLING