

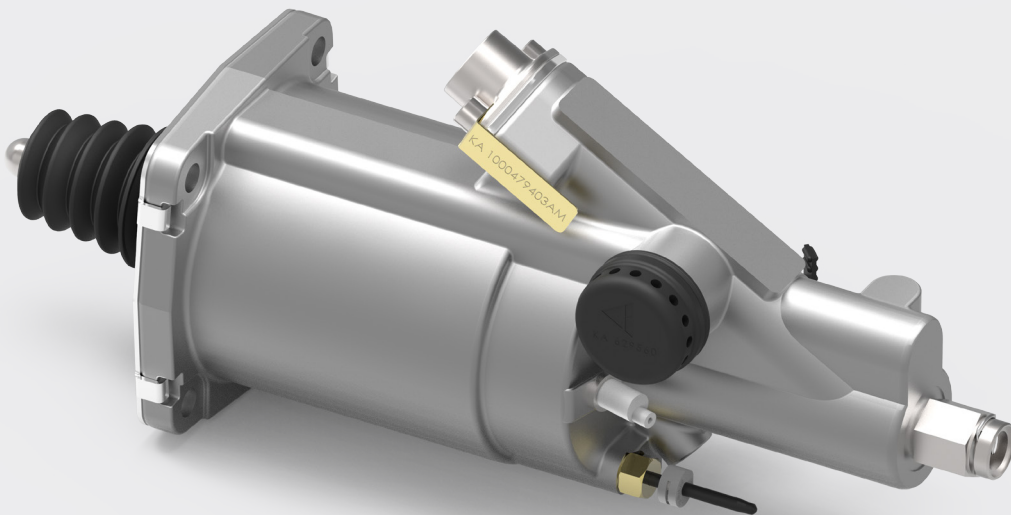
Enhancing the driving experience



Clutch servo

Clutch actuation system for manual transmissions

All clutch servos made by Kongsberg Automotive comes with a mono-block aluminum housing, which is precisely machined for perfect dimensional results. The housing is then subjected to an after-treatment, to ensure a durable and tough surface finish. The final assembly is done with passion, by skilled men and women. All of this, because we take pride in making quality products.



Features

- Unmatched performance, quality and reliability
- Light weight aluminum housing
- Robust and durable design
- Sealing solutions with low stick slip and hysteresis

Product specifications

Dimension: Ø80mm
Application: Renault Midlum from 2000/2001
Fluid: Brake fluid SAE J 1703/DOT 3/DOT4/DOT 5.1
Kongsberg P/N: 1000479403AM
Renault P/N: 5010452429



Designed for your vehicle
Compatibility between old & new parts
Tested products before leaving the factory

Find your distributor here:

