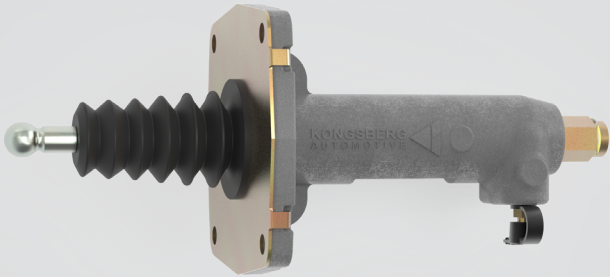
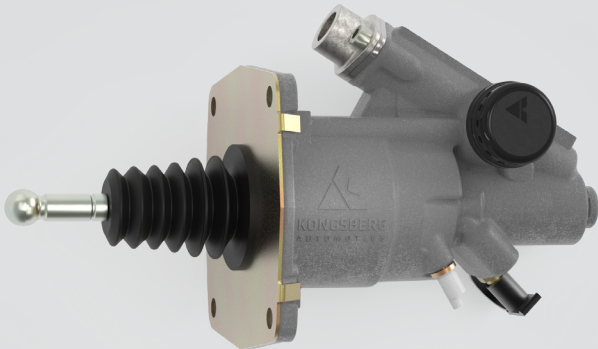


# CLUTCH ACTUATION SYSTEM

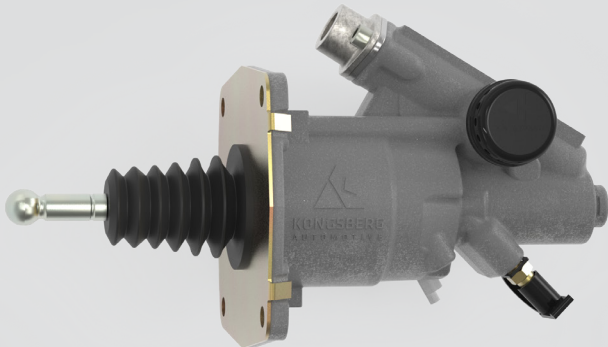
RANGE EXTENSION AND UPDATE IN CAS PORTFOLIO  
FOR NORTH AMERICAN APPLICATIONS



PART NUMBER	DESCRIPTION	APPLICATION	OE CROSS REF.
<b>1001107632AM</b>	SLAVE CYLINDER	PACCAR-Kenworth	E17-1003



PART NUMBER	DESCRIPTION	APPLICATION	OE CROSS REF.	REPLACES
<b>1001102860AM</b>	CLUTCH SERVO	PACCAR-Kenworth	E17-1001, E17-6012	1000285721AM



PART NUMBER	DESCRIPTION	APPLICATION	OE CROSS REF.	REPLACES
<b>1001111375AM</b>	CLUTCH SERVO	PACCAR-Kenworth	E17-1006, E17-6014	1000302236AM

## NEW ADDITION

We are proud to introduce the Slave Cylinder for PACCAR-Kenworth as a valuable addition to our product lineup. Specifically engineered to meet the requirements of the PACCAR-Kenworth New Medium Duty range, this product extends our commitment to cutting-edge solutions.

## RANGE EXTENSION AND UPDATES

- > WE HAVE REVISED TWO PART NUMBERS (SEE TABLES) WITHIN OUR CLUTCH SERVO RANGE TO ALIGN WITH RECENT TECHNICAL ADVANCEMENTS.
- > THE UPDATE ENTAILS AN EXTENSION IN THE PUSH ROD LENGTH OF THE SPECIFIED CLUTCH SERVO PART NUMBERS.

## INTERCHANGEABILITY

- > NEW TECHNICAL ENHANCEMENT HAS BEEN INITIATED TO ENSURE SEAMLESS INTEGRATION WITH THE NEW PACCAR-KENWORTH NEW MEDIUM DUTY RANGE, MEETING THE DEMANDS OF MODERN INDUSTRY STANDARDS.
- > NEW UPDATED CLUTCH SERVOS REMAIN FULLY COMPATIBLE WITH EXISTING APPLICATIONS, PRESERVING THEIR ADAPTABILITY AND USABILITY.